

**Craig's Talk – *How native plants
will save us from wildfires,
droughts and global warming--
and we can restore our Open
Space wildflower meadows
without sowing a single seed!***

**The Reveg Edge, P.O. Box 361,
Redwood City, CA 94064**

650-325-7333

Copyright © January 26, 2021

Craig's talk--

- 1.) California landscaping changes after 1970s.
- 2.) Native plants for wildfire-proofing.
- 3.) Natives plants to increase annual rainfall and eliminate droughts.
- 4.) Native perennial grasses to restart the carbon cycle, and for California to become carbon neutral.
- 5.) Unearthing the dormant native seeds that are 100-250 years old, sleeping underneath the weeds.
- 6.) Help your local open space wildflower fields return in only 3-5 years---by using Craig's method of monthly-mowings---to unearth the dormant seeds!

Pre-1970s drought California landscaping



1950s landscaping relicts remain, home for sale in 2021.



After 1970s drought, replacing lawns with anything from around the world that is drought resistant---



...or just about every kind of succulent...



...and drought resistant shrubs...



...and perennial flowering subshrubs...



OR...plant only local natives, and restore the original ecosystem?



Planting the natives from seed, the four key ingredients that you mix together...1.) Hi-yield brand blood meal...



2.) and...Hi-yield brand bone meal...



3.) ...potting soil...and...



4.) ..the native seeds! Poppies, Tidy tips and Clarkia are a good first start, sown as individual species, and **NEVER** a **MIX!**



Flammable weed-grasses covering the State, do not sequester any carbon in the soil...only the perennial native grasses can do that for us, so we can become **carbon neutral in California in the future.**



And the weed grasses are the main vegetation, that carries the wild land fires each year, to burn forests and homes.



Then, when our biggest weeds burn..*the eucalyptus trees...*



Weed grasses were mowed in spring east of Santa Rosa—the weed straw laid on the ground around the homes in October...



..and burned 70 homes in the Bennett Ridge subdivision during the PG&E fires, to their foundations to ashes.



Currently, Mid-Pen Open Space is writing an EIR to start burning and grazing your public wildflower fields, to control the weeds—*A burn in 2007 at Russian Ridge...*



..Killed 2 million native plants, and helping 2 million more weeds to spread faster in the Russian Ridge Preserve!



**We need to immediately STOP!--ALL of the burning
and grazing that destroys our public open-space
wildflower field, and go to monthly string trimming**



**For many decades in our California grasslands,
we have only been focused on managing
individual species?**

Instead we need to do the conversion from solid
weeds, **back to solid natives in only 4-5 years...**
especially if we can unearth dormant seeds?



Star thistle



Stinkwort



Wild Oats

**Kite Hill in Woodside, 15 acres across from 144 Alta Mesa—
results in only 3-5 years of monthly hand mowing---Close to
100% native cover, without sowing a single native seed!**



One of the first natives to get unearthed in the hills of the SF Peninsula, is the native Miner's Lettuce...



Even if you have solid weed-grasses like ripgut-grass or wild oats--by doing monthly hand mowing at eight inches high...



If there are dormant native seeds still in the soil, will start sprouting up within a year, and surprise you?



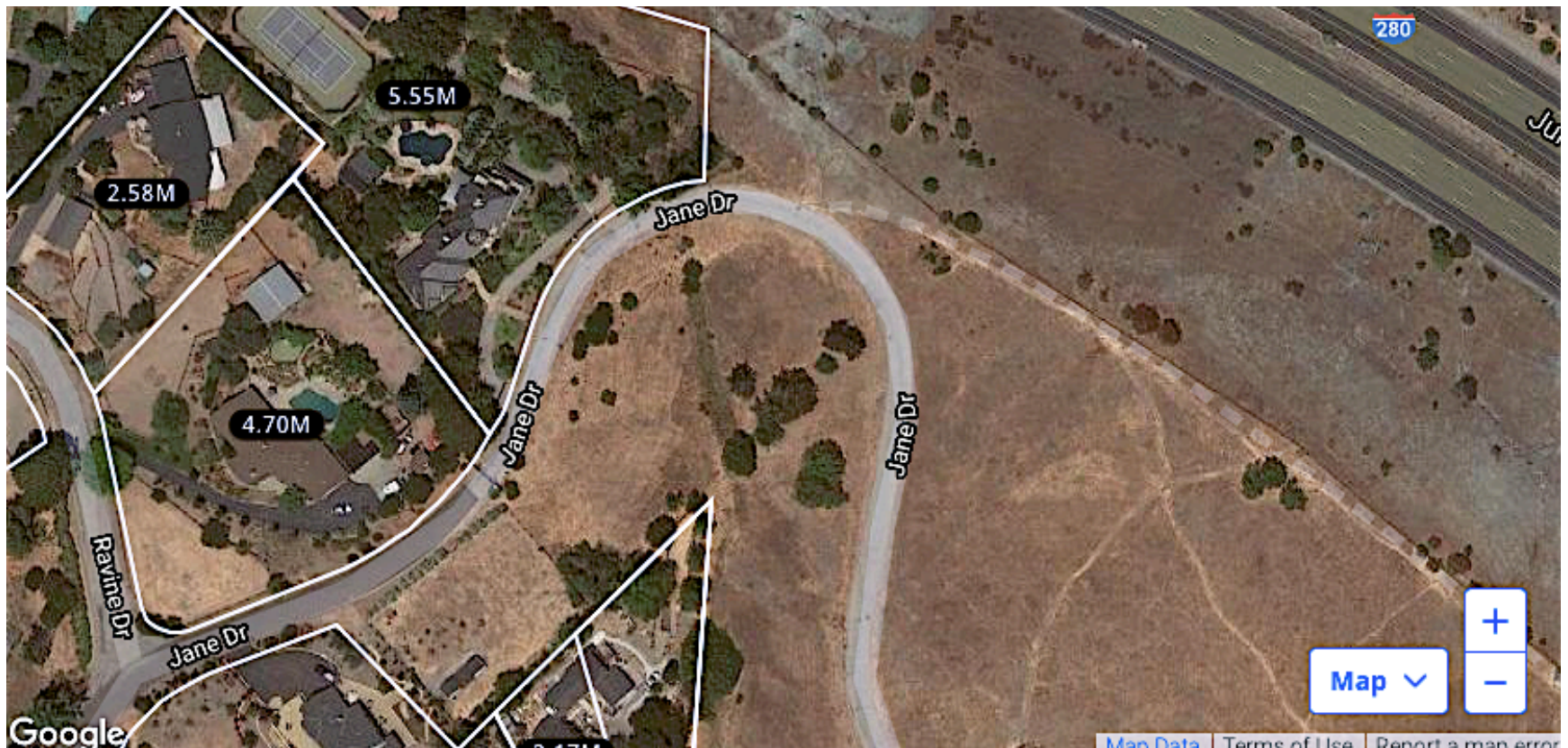
And if we ASK every one of our SF Bay Area open space areas-- to start managing our grasslands with Craig's monthly mowing methods--Edgewood Preserve, Mid-Pen preserves, Stanford's Hills, around the Crystal Springs reservoirs, Jasper Ridge—here is what we could have in only a few years in each of those areas...



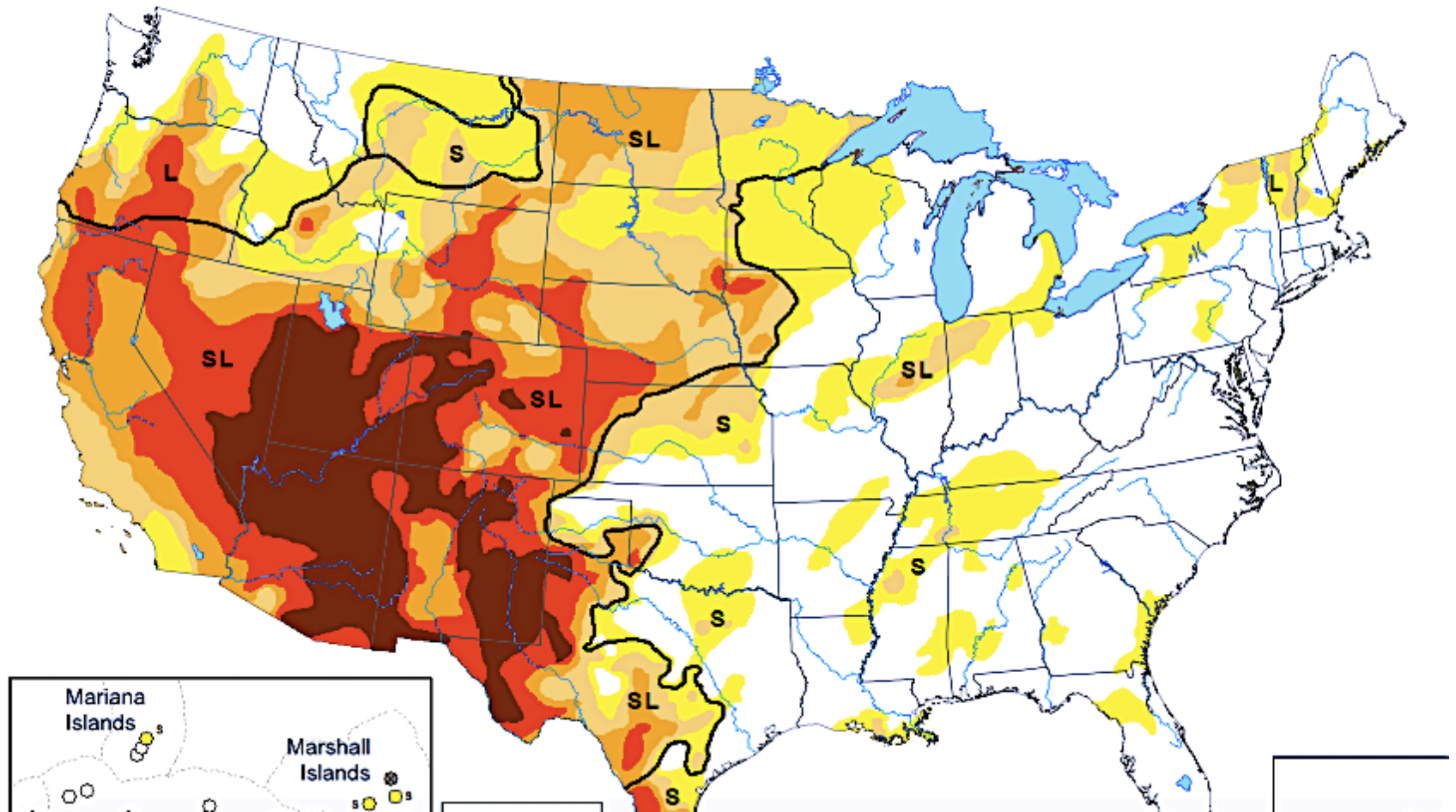
And the monthly mowing at our urban-open spaces will protect our valuable homes--like the multi-million dollar homes surrounding my project in Woodside..



Some agencies may complain that the extra effort and cost of doing my method of hand-string mowing is too expensive--but everyone should consider that it has very good value, to protect our homes, and bring back the wildflowers at the same time?



Current drought conditions--that native plants could help, to increase rainfall and eliminate droughts...



Discover Magazine cover story April 2012--How our rain clouds are created by *Pseudomonas* bacteria that live on the leaves of native plants...



Photo of a rain cloud being born in the hills above Woodside--when the Pseudomonas bacteria get airborne, right after a rain shower..



Everyone can help unearth the wildflower seeds in the grasslands of California that are sleeping underneath the weeds in our Open-Space preserves—by contacting each preserve manager and asking why they are not trying “Craig’s monthly mowing methods” -- so we can have solid and fire-safe wildflower fields in only a few years, and permanently get rid of flammable weed grasses that can burn our homes to their foundations?

WITHIN only 4-5 years of monthly mowing, the weed grasses can be permanently converted back to the original local native wildflower fields, without sowing a single seed?

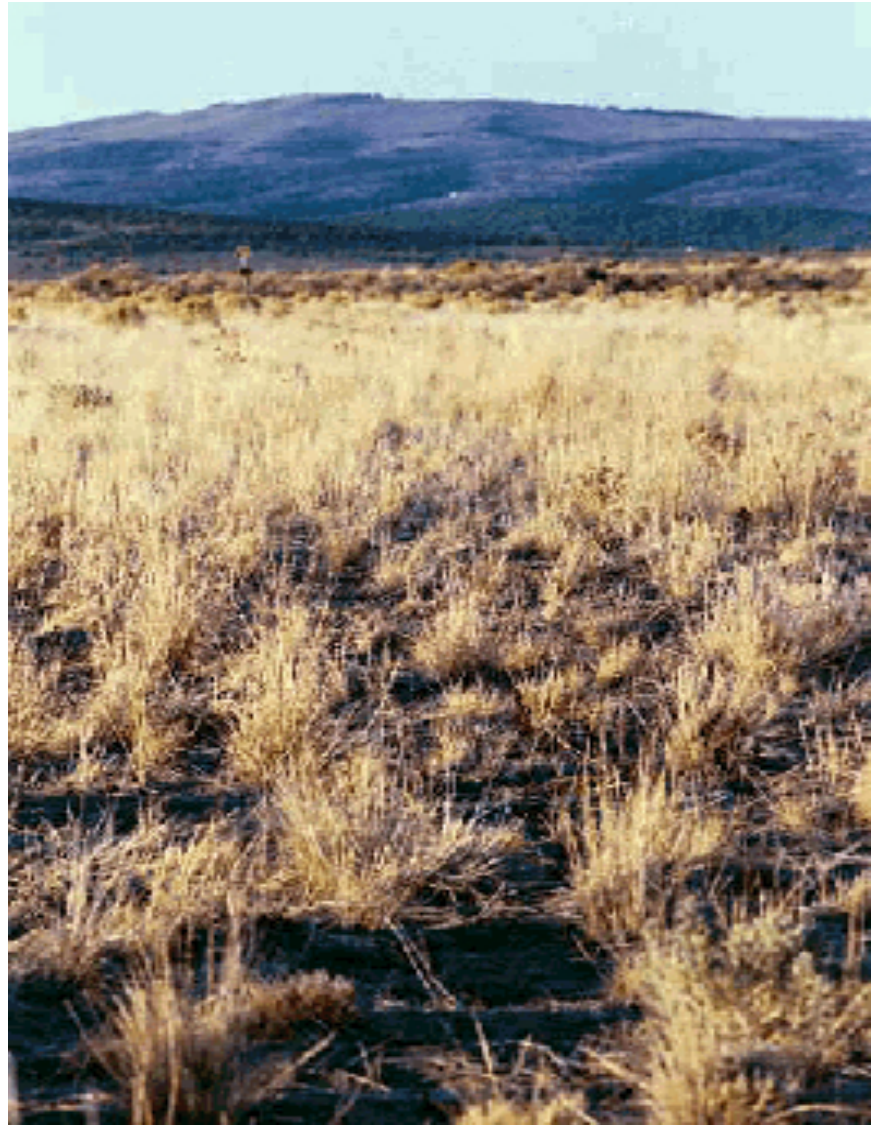
Craig's Projects so far

- 1992-2000 – Discovered on the 70 acre property at 300 Byers Lane, La Selva Beach, that dormant native seeds existed on every square foot. Project turned the 99% weed-covered property back to 95% native in only eight years, with no burning or grazing, and not sowing any native seeds. Story at www.ecoseeds.com/shaw.pdf



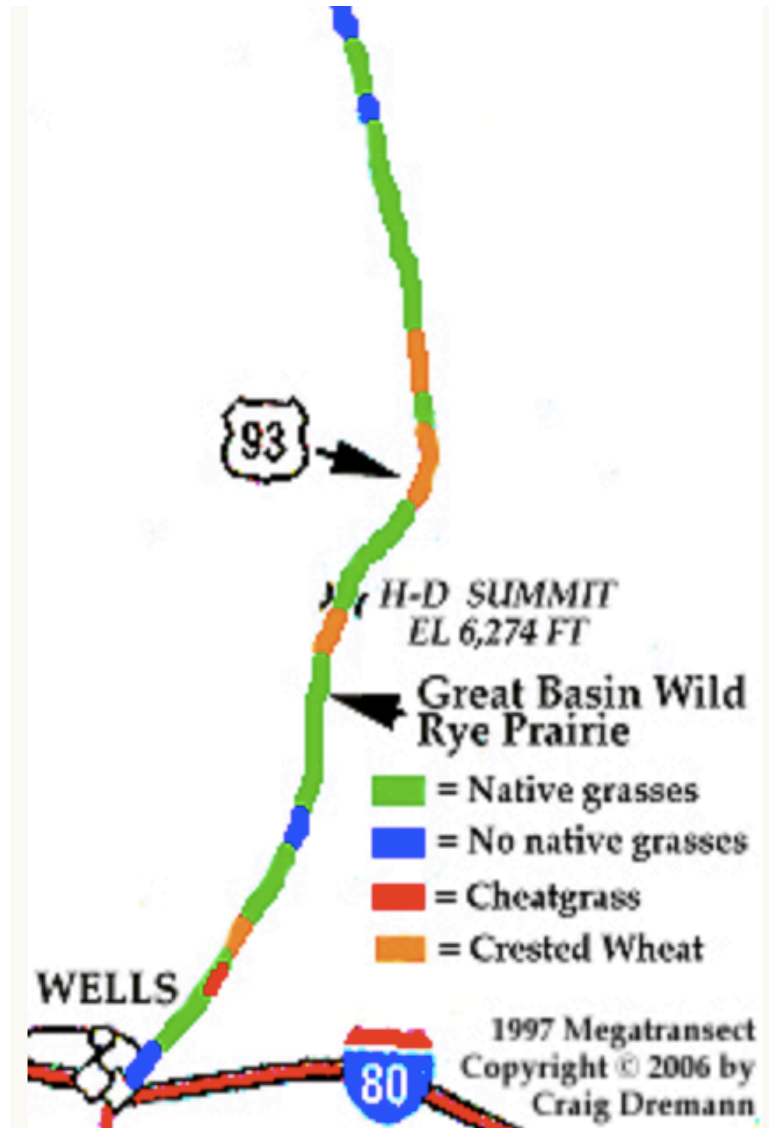
Craig's Projects

- 1993-1994 Got rid of cheatgrass permanently by sowing natives correctly— Craig invented the methods to replant 600 acres of cheatgrass infested sagebrush desert north of Reno in 8 inches of rainfall, so that there was zero cheatgrass within six months--25 years later, is still 95% native cover. Bluebunch wheatgrass in picture.



Craig's Projects

- 1997 Megatransect from California to South Dakota and back—Noted at each post mile, what plant was growing at that spot, native or exotic and extent outward from the roadway. Details at www.ecoseeds.com/megatransect.html - Available under a license.



Craig's Projects

- 2002-2010 – Working with the World Bank representative for Saudi Arabia, the Kingdom made the decision to set aside 31 million acres of Arabian deserts east of the capitol Riyadh, as the world's largest Ecological Restoration Preserves. *See Craig's plan at www.ecoseeds.com/cool.html to help the native grasses to grow, and the dry stream beds (wadis) to flow again.*

Craig's Projects

- 2020-current – Working with the ranchers in Nevada to determine how long that native- grass soil-carbon is sequestered in the soil in deserts. There is a possibility that the desert grasses could be producing more annual net income per acre as carbon credits, than can be obtained by utilizing those same grasses as cattle feed? Going to be carbon-date soil samples, and estimating that carbon could be sequestered in the deserts for 100s to 1000s of years.

Craig's Projects

- 2021 onward – BLM owns hundreds of millions of acres in the Great Basin, where they are sowing millions of pounds of seeds after the cheatgrass fires, and are still producing 70% failures. Offering services to be a trouble-shooter for future projects, by setting up small scale test plots to test the seeds and methods, before the larger project is conducted, to get as close to 100% successes every time.

Craig's Projects

- 2021 onward. Increase annual rainfall and stream flows in the West, so that the tens of millions of people living here, can continue to for some time into the future.
- “Dotted Blue to Solid Blue™” is the name of the project, using native plants to get intermittent streams to become perennial streams, for example.

Converting Deserts back to Grassland-Savannahs in the USA and elsewhere.

- 2021-current. By planting native desert plants, can cool the surface and help naturally manage Global Warming, as an alternative to the crazy Geo-engineering solutions—like the proposed monthly launches of missiles to deploy tiny particles into the stratosphere, to block sunlight. The native plants would do that on the ground--by insulating the barren desert soil and blocking the soil from absorbing the sun's heat.